

QUICK REFERENCE GUIDE TO NETWORKING HANDLES, LATCHES AND LOCKS

Hoffman offers an array of handles, latches and locks to help make your cabinet application as secure yet easy to use as possible. Maintains cabinet rating Type 3R, 4, 12.



| Cabinet | Std. Key Code | Keylocking Wing Knob (DL36, PTL36B,PTWK) | Padlocking L Handle (ELHP) | Padlocking Quarter-Turn Latch (EPL4) | 3-Digit Combination Lock ^a (PTLCMB3B) | Quarter-Turn Lock (PSCLO) | Quarter-Turn Lock (DKL2233) | Combination Lock Handle |
|---------------------|---------------|--|----------------------------|--------------------------------------|--|---------------------------|-----------------------------|-------------------------|
| ComLine | | • | • | • | • | | | |
| AccessPlus | 333 | • | • | • | • | | • ^b | |
| D-Box | 333 | • | • | • | • | | | |
| L-Box | 333 | • | • | • | • | | • ^b | |
| ProLine side panels | 2233 | | | | | • | | |
| ProTek | 333 | • | • | • | • | | | |
| Seismic side panels | 2233 | | | | | • | | |
| SOHO side panels | 2233 | | | | | • | | |

^aDo not use 3-Digit Combination Lock in severe environments such as corrosive, very wet, salt spray or mist.

^b2233 Key Code

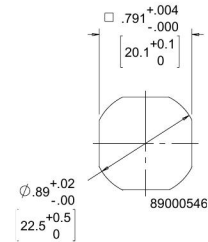
PADLOCKING L HANDLE



L Handle easily turns to open and close cabinet. Padlock can be added for extra security. Handle has a black and silver finish. Install using existing enclosure cam. Maintains cabinet rating Type 3R, 4, 12.

BULLETIN: DCOMY

| Catalog Number | Description | Use with |
|----------------|---------------------|------------------------------------|
| ELHP | Padlocking L Handle | AccessPlus, L-Box, ComLine, ProTek |



COMBINATION LOCK HANDLE



Combination Lock Handle fits cabinet doors. The 4-digit combination lock with master key override can easily be changed. Install using existing cam from standard handle.

BULLETIN: DCY

| Catalog Number | Description | Use With |
|----------------|--|---------------------------|
| NCLH | L-Handle with combination lock and master key override | All ProLine S1 full doors |

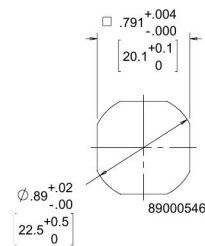
PADLOCKING QUARTER-TURN LATCH



Quarter-Turn Latch requires Allen wrench, included with lock, to open or close cabinet. Padlock can be added for extra security. Install using existing enclosure cam. Maintains cabinet rating Type 3R, 4, 12.

BULLETIN: DCOMY

| Catalog Number | Description | Use with |
|----------------|-------------------------------|---|
| EPL4 | Padlocking Quarter-Turn Latch | AccessPlus, L-Box, D-Box, ComLine, ProTek |



3-DIGIT COMBINATION LOCK

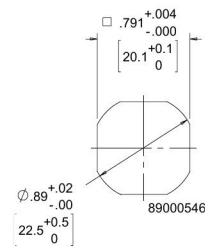


3-Digit Combination Lock in handle eliminates the need to carry around a key. Combination can easily be changed. A quarter turn of the handle opens and closes the cabinet. Lock has silver and black finish. Install using existing enclosure cam. Maintains cabinet rating Type 12.

Do not use in severe environments such as corrosive, very wet, salt spray or mist.

BULLETIN: DWS12

| Catalog Number | Description | Use with |
|----------------|------------------|---|
| PTLCMB3B | Combination Lock | AccessPlus, L-Box, D-Box, ComLine, ProTek |



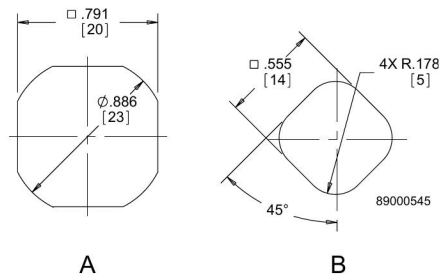
QUARTER-TURN LOCK



Quarter-turn keylock includes one key. Install using existing enclosure cam on DKL2233.

BULLETIN: DACCY, DPC

| Catalog Number | Description | Use with | Hole Size | Key Code |
|----------------|----------------------|--|------------------------------|----------|
| PSCLO | Quarter-turn keylock | Side panels on ProLine, ProLine S1, SOHO and Seismic cabinets; side panels and keyboard on PC cabinets | B (see dimension drawing) | 2233 |
| DKL2233 | Quarter-turn keylock | AccessPlus, L-Box, D-Box | A (see dimension drawing) | 2233 |



REPLACEMENT KEYS



Fits ProLine Network Cabinet and Networking Wall-Mount Cabinet.
BULLETIN: DACCY

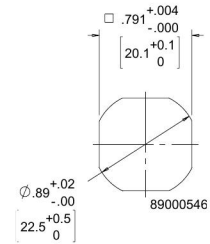
| Catalog Number | Key Code | Includes | Use with |
|----------------|----------|----------|---------------------------------------|
| E2233KEY | 2233 | 2 Keys | ProLine, ProLine S1, PC Cabinet, SOHO |
| E333KEY | 333 | 2 Keys | AccessPlus, L-Box, D-Box |

KEYLOCKING WING KNOB



Locking wing nut position shows whether door is locked. Wing nut has silver finish. Includes 2 keys with 333 key code. Install using existing enclosure cam. Maintains cabinet rating Type 12.
BULLETIN: A80

| Catalog Number | Description | Use with |
|----------------|-----------------------------|---|
| DL36 | Chrome Keylocking Wing Knob | AccessPlus, L-Box, D-Box, ComLine, ProTek |



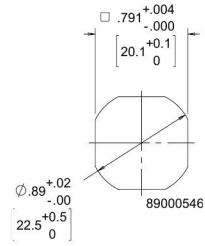
KEYLOCKING QUARTER-TURN WING KNOB



Keylocking quarter-turn wing knob latch. Black finish. Includes gasket, mounting nut and one key with 333 key code. Use existing cam for installation; cam is not included with wing knob. Can be locked in open or closed position. Maintains cabinet rating Type 4, 12.

BULLETIN: DWS12

| Catalog Number | Description | Use with |
|----------------|------------------------------------|---|
| PTWK | Keylocking wing knob, quarter-turn | AccessPlus, L-Box, D-Box, ComLine, ProTek |



PADLOCKING WING KNOB, STAINLESS STEEL



Padlocking quarter-turn wing knob is made of Type 304 stainless steel. When the padlock is in place, the wing knob cannot be rotated and the cabinet is secured. The wing knob has a brushed bright finish. Maximum padlock diameter is .31 (8mm). Use existing cam for installation; cam is not included with wing knob. It maintains the cabinet rating Type 3R, 4, 4X, 12.

BULLETIN: DWS12

| Catalog Number | Description | Use with |
|----------------|------------------------------------|---|
| PTWPSS | Padlocking wing knob, quarter-turn | AccessPlus, L-Box, D-Box, ComLine, ProTek |

